



Hepworth Court, 30 Gatliff Road
London SW1W

GARTONJONES.COM



Hepworth Court, 30 Gatliff Road
London, SW1W

GARTON JONES.COM

8 Gatliff Road
Chelsea
London
SW1W 8DP

Lettings:
+44 (0) 20 7730 5007
gws@gartonjones.com
www.gartonjones.com

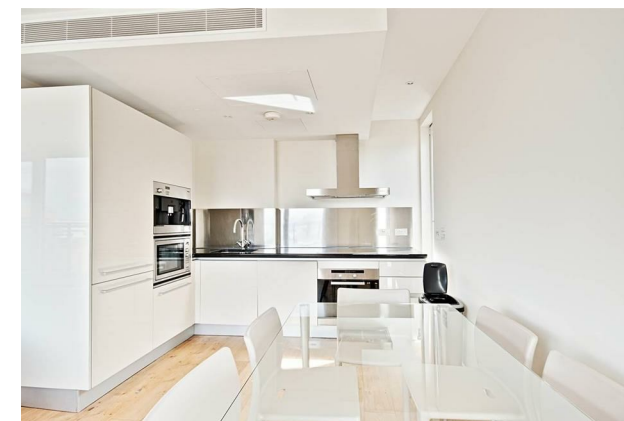
£700 Per Week

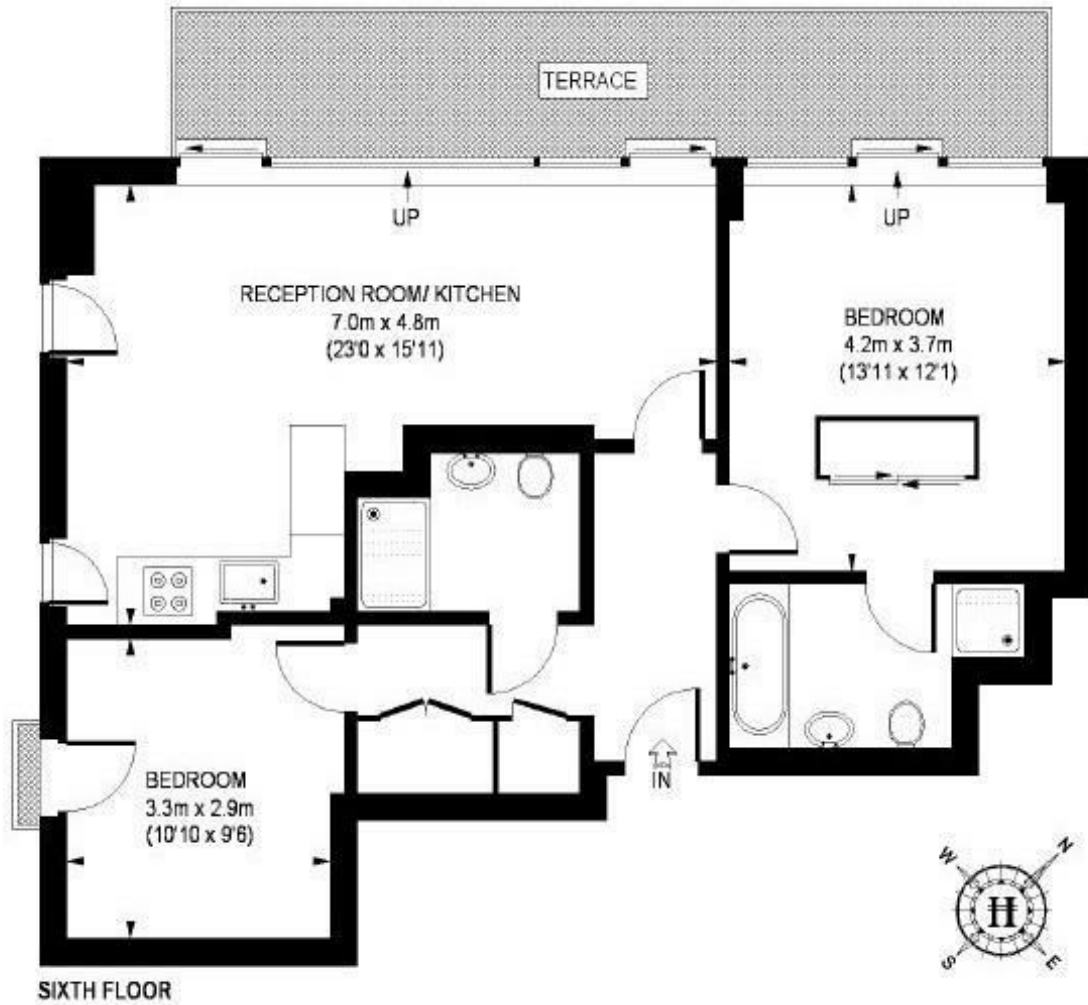
A two DOUBLE BEDROOM apartment to rent of approx. 829sq.ft (77sq.m) of Hepworth Court, located close to the River Thames. This FURNISHED apartment has a BALCONY and further comprises of an OPEN PLAN reception room with floor to ceiling windows, a kitchen with integrated appliances, two bathrooms (one en-suite), wood flooring, comfort cooling and good storage including wardrobes to the master bedroom and a utility cupboard housing a washer dryer. Underground parking is also included. 24 HOUR CONCIERGE, GYM & SPA. On-site Sainsbury's Local, coffee shop and private kids club. SLOANE SQUARE & VICTORIA station with Gatwick Express are within walking distance.

Available via Garton Jones on-site office at Grosvenor Waterside (underneath Bramah House).

*Please note furniture may differ to that shown in the current photos

- 810sq.ft (75sq.m)
- 2 Double Bedrooms
- 2 Bathrooms (1 En-Suite)
- Open Plan Reception Room
- Kitchen with Integrated Appliances
- Large Balcony
- 24 Hour Concierge + Secure Underground Parking
- Residents Leisure Suite with Gym & Spa Facilities
- On-Site Sainsbury's, Coffee Shop & Bakery, Purple Dragon Private Kids Club & Crèche
- Walking Distance to Sloane Square and Victoria Station





SIXTH FLOOR

APPROXIMATE GROSS INTERNAL AREA = 829 SQ. FT. (77 SQ. M.)

